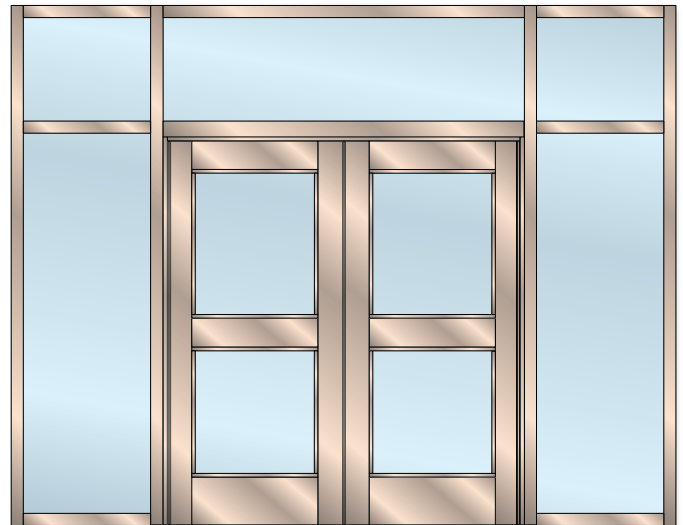




MEETS UFC 4-010-01 2007 CRITERIA • THIRD PARTY ANALYSIS • MANUFACTURED IN THE USA

STANDARD B7600 FEATURES

- Aluminum Entry System for blast mitigation
- Provides GSA Level C protection against explosive attacks
- Single and double door panels available
- Door thickness of 1³/₄", accepting 1" insulating glazing units with laminated interior glass
- Stile width of 5³/₄", with 7¹/₄" top rail and 10³/₄" bottom rail standard (sightlines)
- High-performance fixed framing provides a 6³/₈" system depth, 2¹/₂" sightline
- Pressure plate system for easy field glazing
- Screw spline frame construction
- Transom and sidelite elevation configurations available



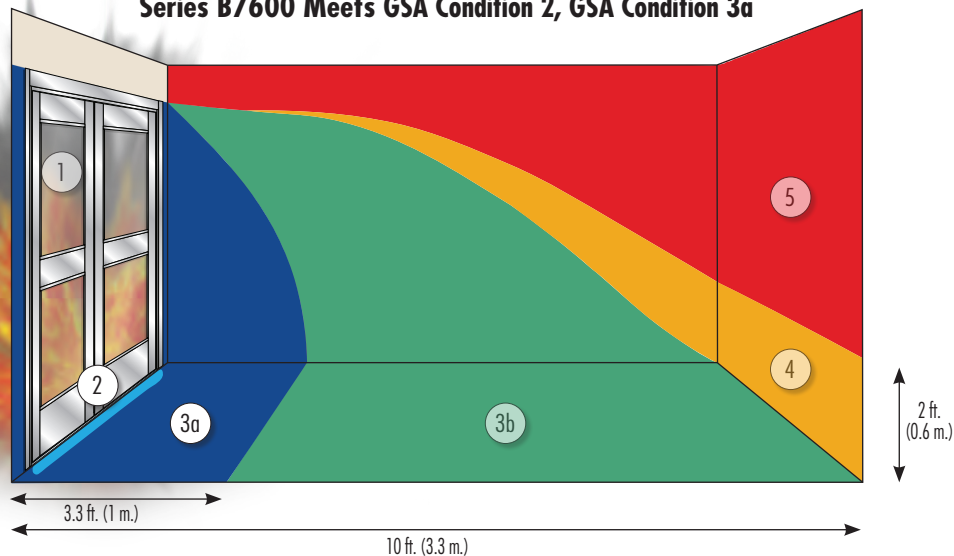
Blast-Resistant Entry System

SERIES B7600 PERFORMANCE

WINDOW TYPE	FRAME DEPTH (inches)	SERIES	DESIGNED BLAST PRESSURE (psi)	POSITIVE PHASE IMPULSE (psi-msec)	WINDOW SIZE (inches)	GLAZING COMPOSITION (inches)	TESTING & CERTIFICATIONS			
							Test Methods	Qualified	Certification	
Aluminum Entry Doors	Single	6%	B7600	6.4	50	44 ¹ / ₂ x 88 ¹ / ₄	3/16 tempered, 9/16 as, 1/4 lami	ASTM F 1642	ASTM "Minimal Hazard" GSA Condition 2 UFC 4-010-01	ATI Security Fenestration Certification Program
	Double	6%	B7600	6.9	45	82 ¹ / ₄ x 89	3/16 tempered, 9/16 as, 1/4 lami	ASTM F 1642	ASTM "Very Low" Hazard GSA Condition 3a UFC 4-010-01	ATI Security Fenestration Certification Program

Products comply with Unified Facilities Criteria UFC 4-010-01; 8 October 2003 Including change 1, 22 January 2007 DoD Minimum Antiterrorism Standards for Buildings

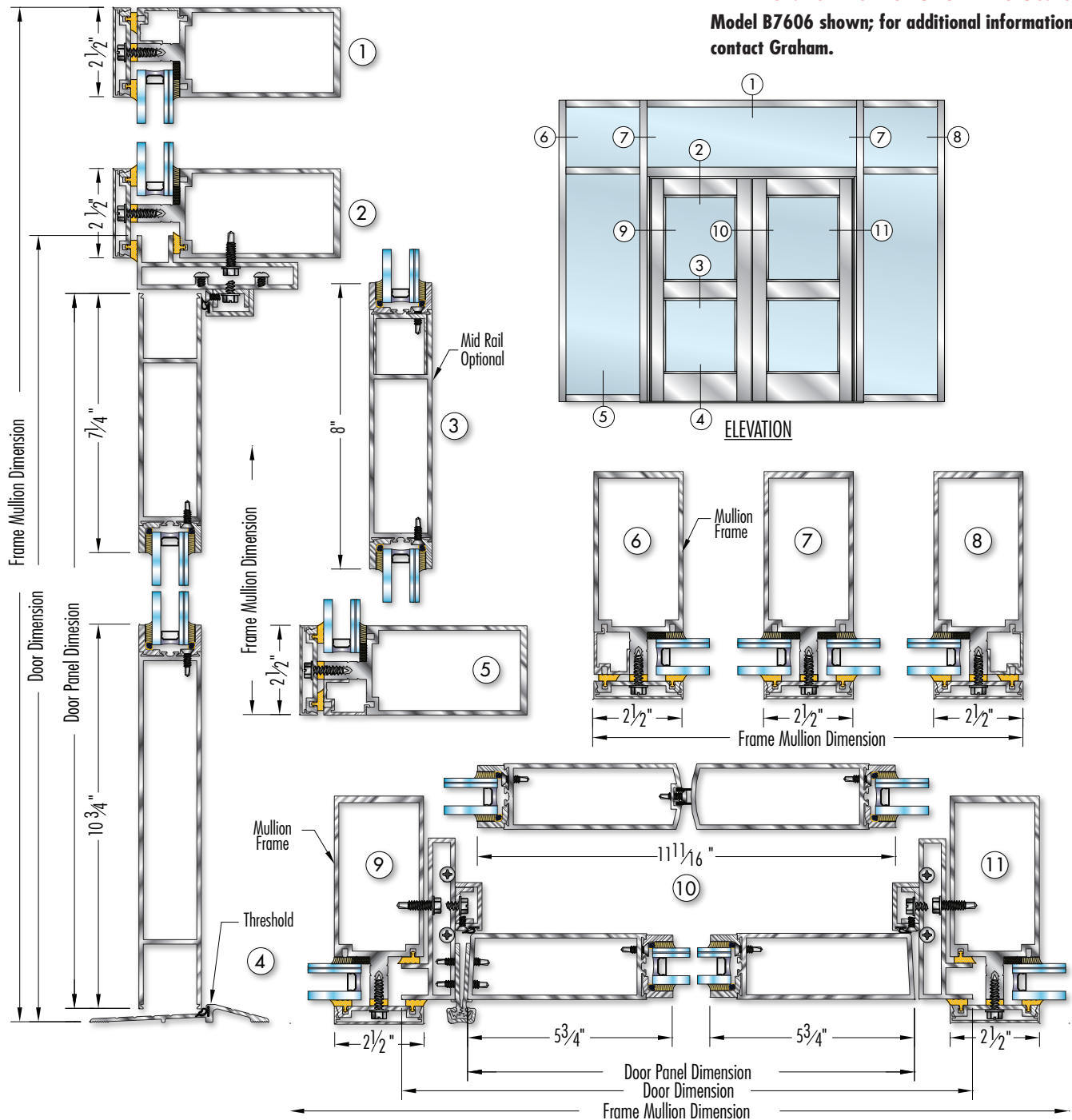
Series B7600 Meets GSA Condition 2, GSA Condition 3a



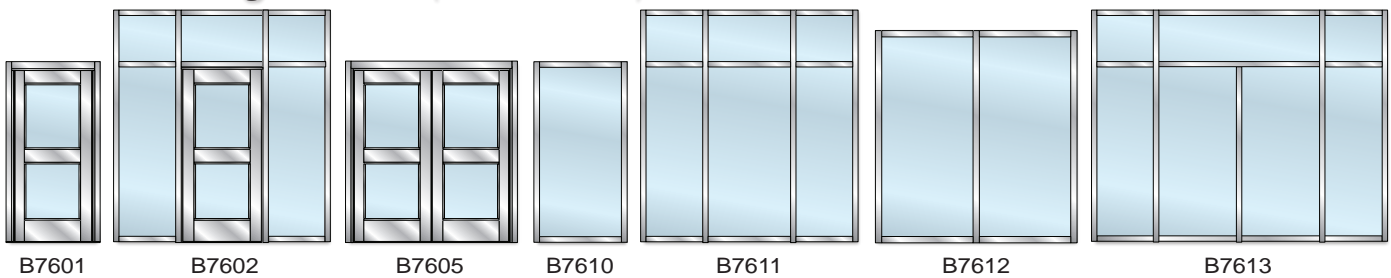
Series B7600 6³/₈" Frame Depth
BLAST-RESISTANT
ENTRY SYSTEM



Details Are Not Shown to Scale
 Model B7606 shown; for additional information
 contact Graham.



Additional Configurations (Others Available)



B7601

B7602

B7605

B7610

B7611

B7612

B7613