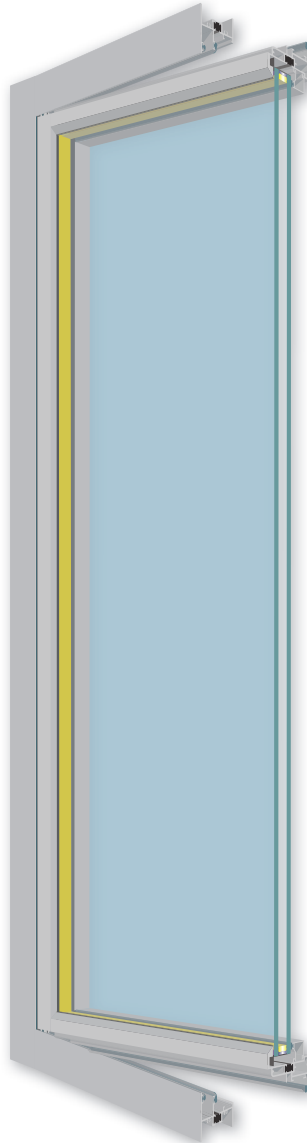


**Series 7000/7100** 2¼" & 3¼" Frame Depth  
TERRACE DOOR

IN-SWING/OUT-SWING



**STANDARD FEATURES**

- Sloped-exterior glazing leg simulates putty-glazed profile
- Mulls horizontally or vertically to 2¼" or 3¼" frame fixed and operable products
- Overlap of vent & frame for aesthetic appeal
- Multi-point locking hardware

**OPTIONAL FEATURES**

- Low-profile sill
- Applied grids
- Simulated divided lites (SDL) - triple grids for authentic true-grid replication
- Insulated kick panel

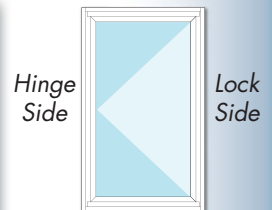
**SERIES 7000/  
7100  
QUICK VIEW:**

Heavy-commercial grade hinged door ideal for apartments, hotels, and condos. Multi-point locking hardware ensures security.

Contact your nearest sales representative for more information.

**SERIES 7000/7100 PERFORMANCE CHARACTERISTICS**

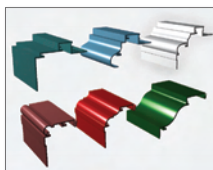
TYPE	AAMA RATING & TEST SIZE	AIR (cfm/ft <sup>2</sup> ) at 50 mph	WATER (psf)	DESIGN PRESSURE (psf)	UNIFORM LOAD STRUCTURAL (psf)	U-VALUE (Btu/hr/ft <sup>2</sup> /°F)		CRF	STC RATING
						Low-E glass	Non-coated glass		
Series 7000 TERRACE DOOR	ATD-HC50 42x90	0.05	10	60	75	0.47	0.64	57	32-36
Series 7000 TERRACE DOOR <small>low sill</small>	HGD-HC40 58x96	0.05	6	60	67.5				
Series 7100 TERRACE DOOR	ATD-HC50 42x90	0.05	10	60	75	0.47 <sup>①</sup>	0.64 <sup>①</sup>	57 <sup>①</sup>	32-36 <sup>①</sup>



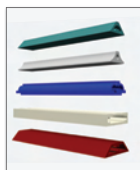
① Estimated values

**Series 7000/7100 OPTIONS**

The information on this page is current at the time of publication.



Panning Profiles



Muntin/Grid Profiles



Interior Trim Profiles



Standard Handle



Key-Lock Handle



Thumb-Lock Handle



Aluminum Butt Hinge

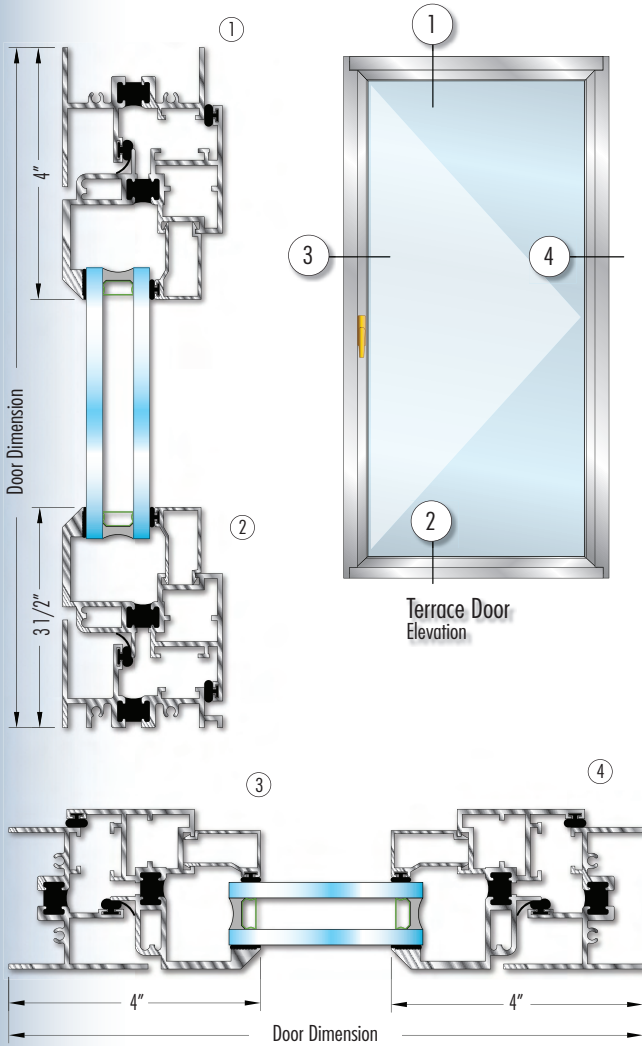
**Series 7000/7100** 2 1/4" & 3 1/4" Frame Depth  
TERRACE DOOR

IN-SWING/OUT-SWING

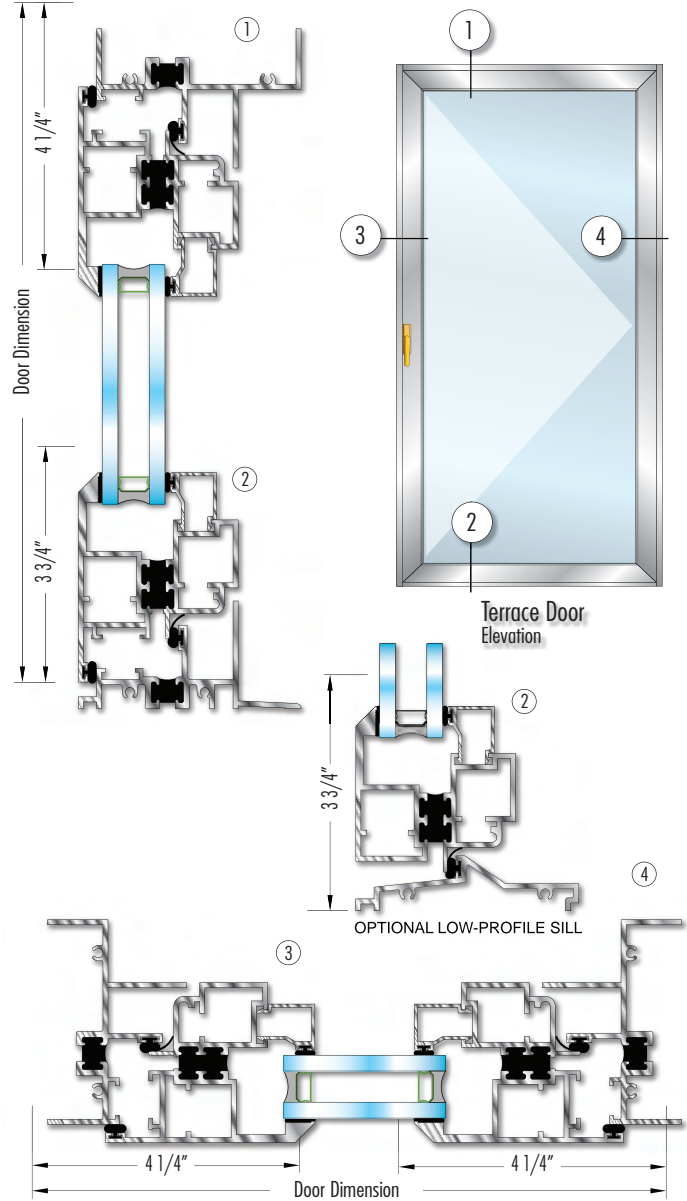


**STANDARD PRODUCT DETAILS SHOWN**

**SERIES 7000 2 1/4" FRAME DEPTH**



**SERIES 7100 3 1/4" FRAME DEPTH**



**Details Are Not Shown to Scale**  
See website for other available configurations

Window Series:  
**7000/7100 TERRACE DOOR**  
General Specifications & Details

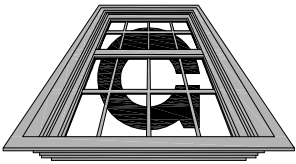
- Nominal Frame/Sill Wall Thickness: 0.080"
- Applications: Apartments, hotels, and condos
- Max. Test Size:  
4'10" x 8'0"
- Glazing Options:  
Insulated: 1" IG
- Muntins: Between-the-glass grids and applied grids available

- Finish Options:  
AAMA 2603 – Standard acrylic or polyester  
AAMA 2604 – 2 coat 50% fluoropolymer  
AAMA 2605 – 2 coat fluoropolymer 70% kynar  
Powder Coat  
Anodized
- Hardware:  
Multi-point hardware
- Accessories:  
Frame Family: 2-1/4" / 3-1/4"  
Fixed Lite Option System: 6500 & 6600 / 1200  
Mullions: Stacking: Fixed stack mull  
Side: 3-piece mull  
Panning: Available  
Trims: Available  
Receptor Systems: Available
- Exceptions:  
Call Graham sales rep or see website for more information.

Graham

# Terrace Door - 2 1/4"

SHD-HC50



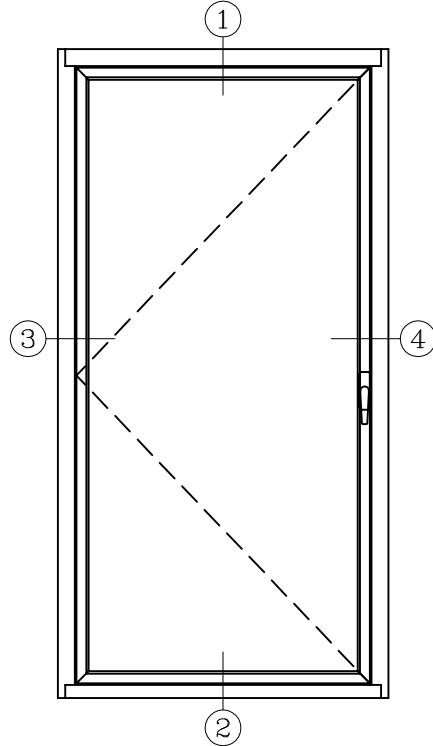
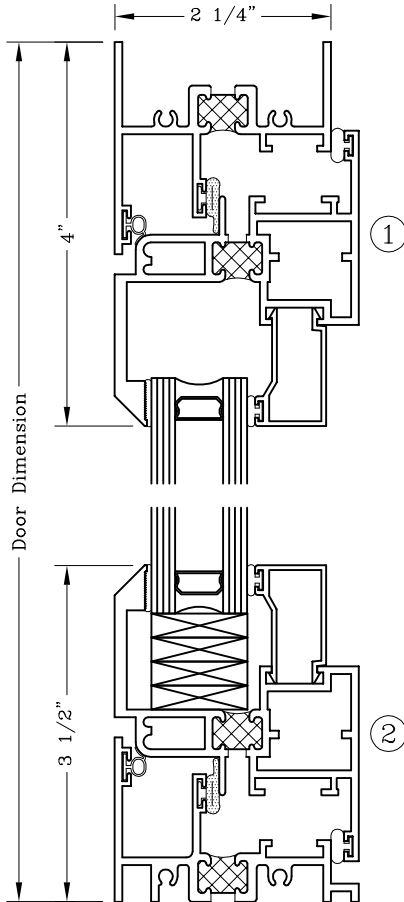
Architectural Products

Series: 7000

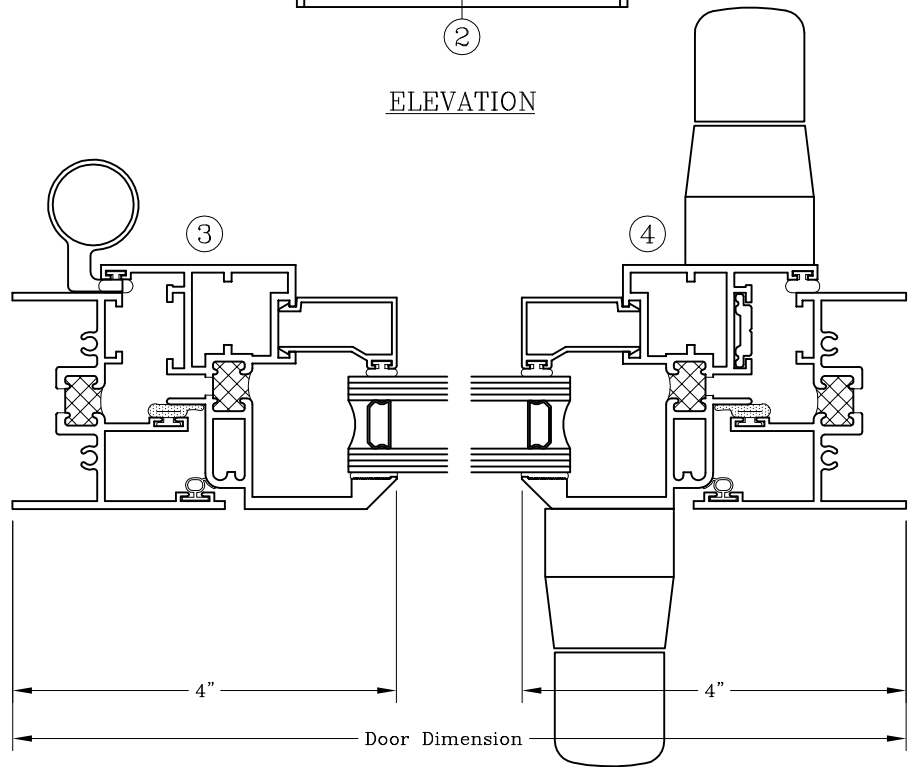
Manufacturing Code: 7001

Drawing 1/2 Scale - For Custom Size Drawing Contact Graham

Note: Sealant Not Shown On Details. Consult Technical Services At Factory For Sealing Procedures.



ELEVATION

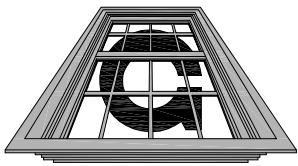


Note: Dashed Lines Represent Inswing Vented Units Solid Lines Represent Outswing Vented Units; Lines Converge At Hinge Side Of Vent

Graham

# Terrace Door - 2 1/4"

SHD-HC50



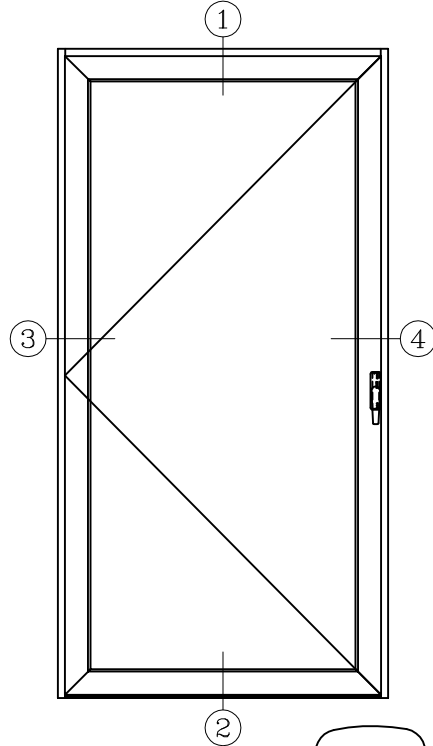
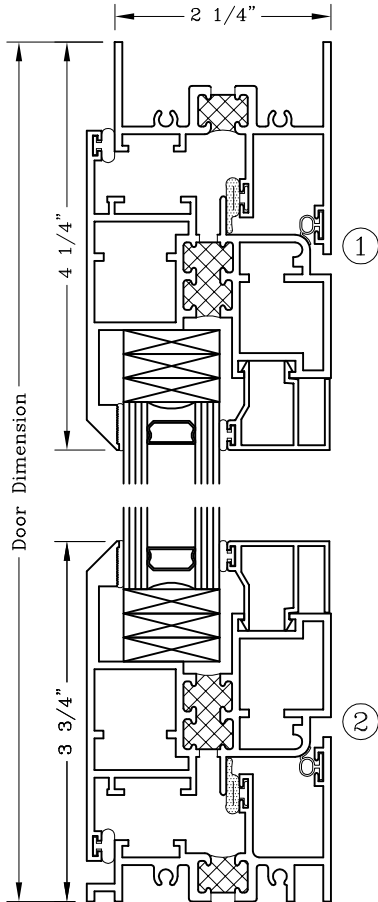
Architectural Products

Series: 7000

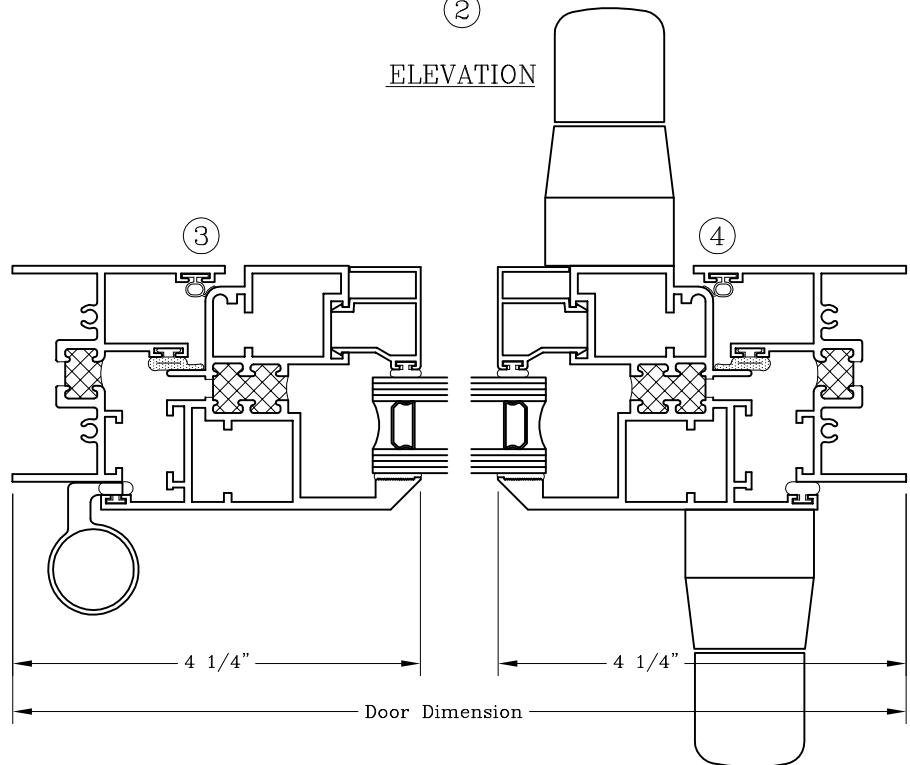
Manufacturing Code: 7002

Drawing 1/2 Scale - For Custom Size Drawing Contact Graham

Note: Sealant Not Shown On Details. Consult Technical Services At Factory For Sealing Procedures.



ELEVATION

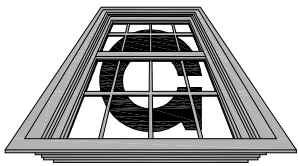


Note: Dashed Lines Represent Inswing Vented Units Solid Lines Represent Outswing Vented Units; Lines Converge At Hinge Side Of Vent

Graham

# Terrace Door - 3 1/4"

SHD-HC50



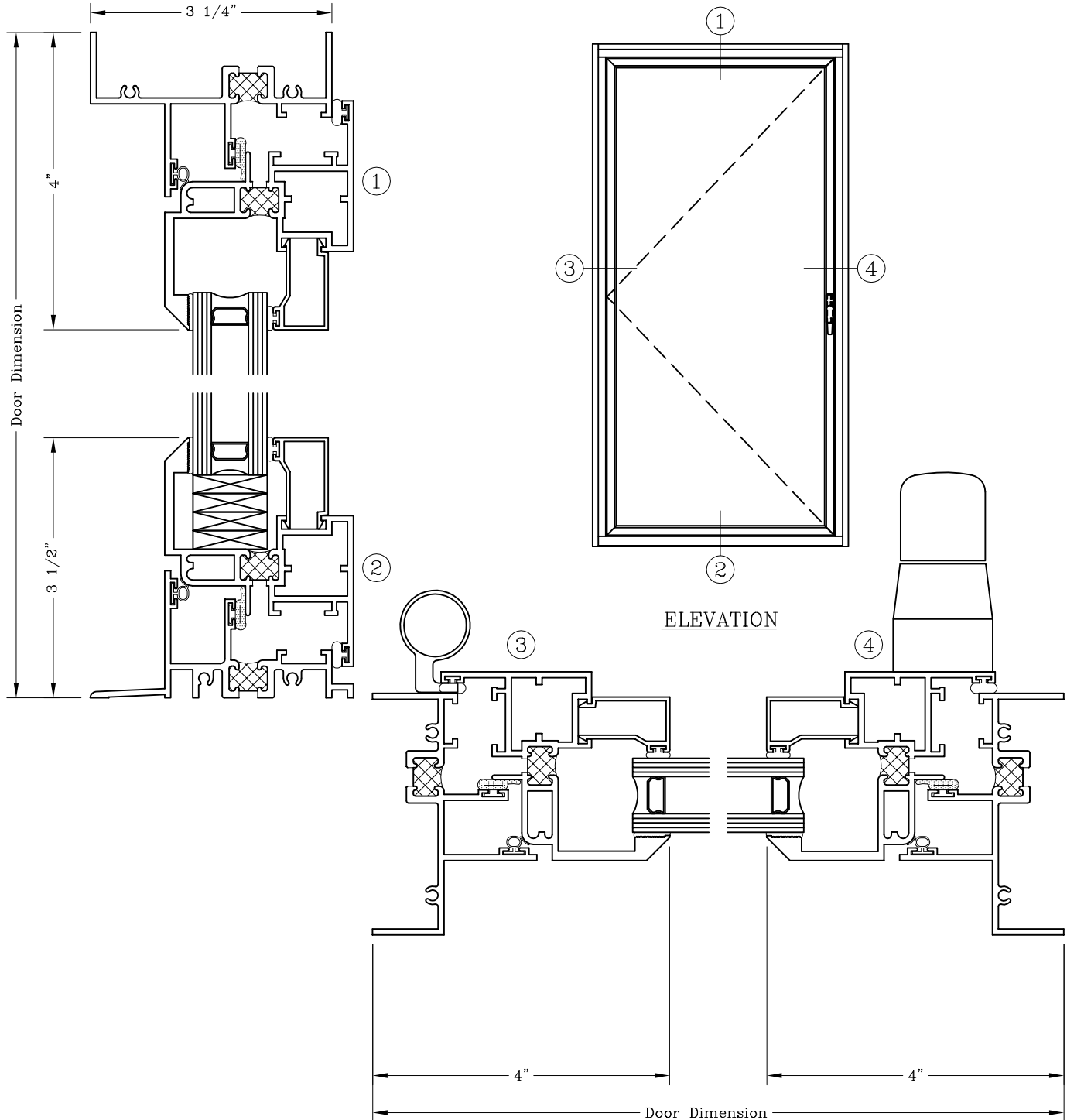
Architectural Products

Series: 7100

Manufacturing Code: 7101

Drawing 1/2 Scale - For Custom Size Drawing Contact Graham

Note: Sealant Not Shown On Details. Consult Technical Services At Factory For Sealing Procedures.

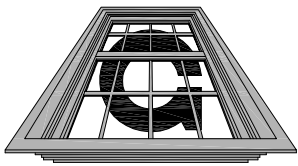


Note: Dashed Lines Represent Inswing Vented Units Solid Lines Represent Outswing Vented Units; Lines Converge At Hinge Side Of Vent

Graham

# Terrace Door - 3 1/4"

SHD-HC50



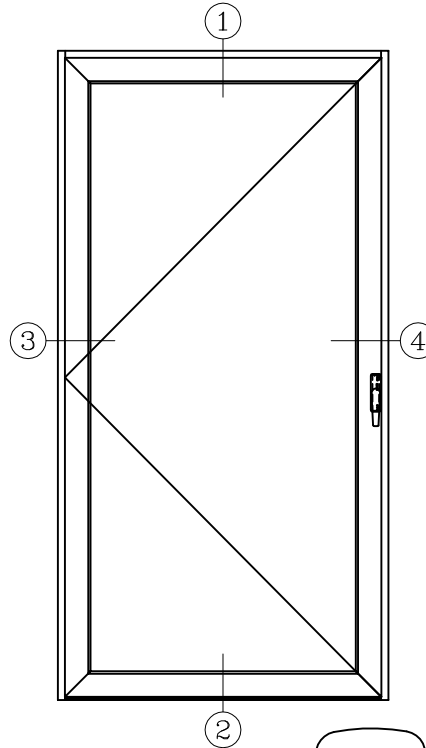
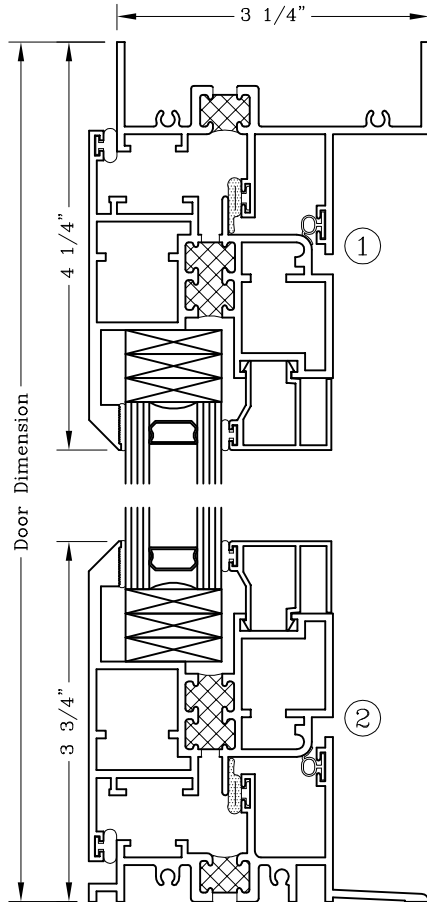
Architectural Products

Series: 7100

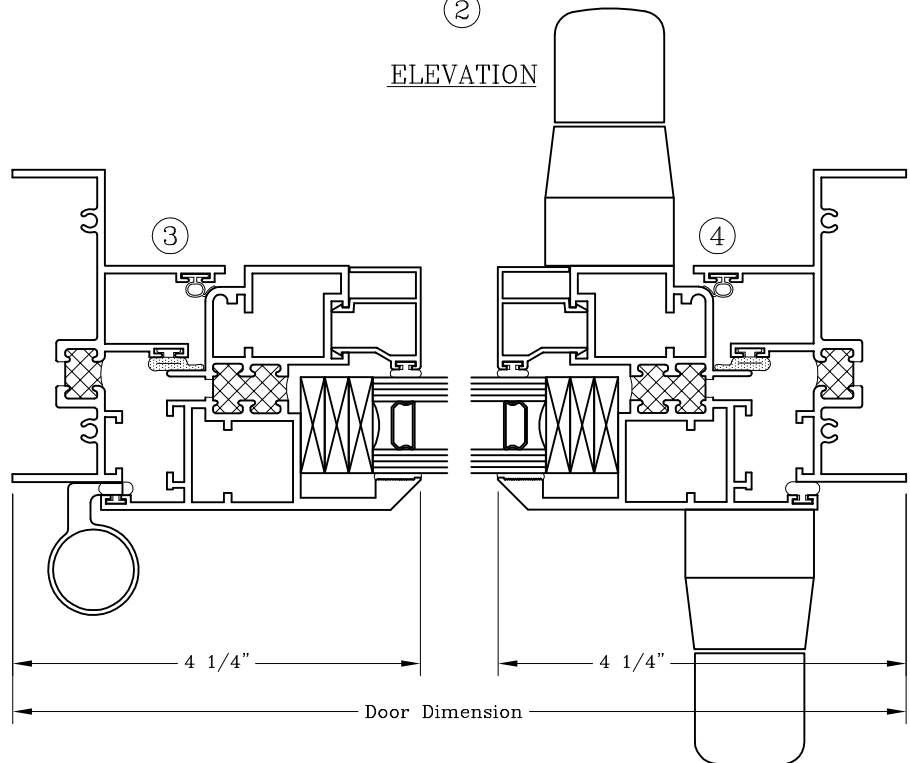
Manufacturing Code: 7102

Drawing 1/2 Scale - For Custom Size Drawing Contact Graham

Note: Sealant Not Shown On Details. Consult Technical Services At Factory For Sealing Procedures.



ELEVATION



Note: Dashed Lines Represent Inswing Vented Units Solid Lines Represent Outswing Vented Units; Lines Converge At Hinge Side Of Vent