

DRAWING NO.

C-01

SCALE:

NONE

BY DATE

REVISIONS

DRAWN BY: DATE: 09/25/08

CHECK BY: DATE:

PROJECT: .....

LOCATION: .....

ARCHITECT: .....

OWNER: .....

DRAWING TITLE  
COVER SHEET

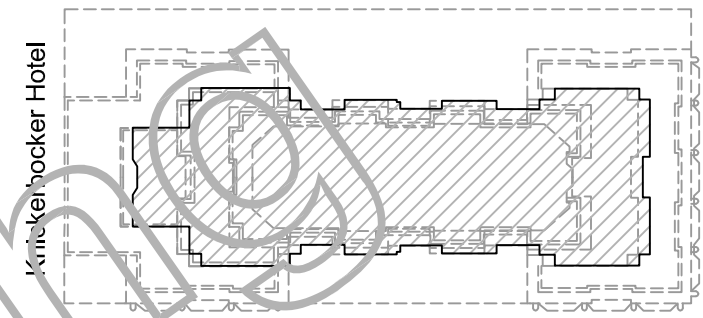
DRAWING NO.

C-01

NORTH



Westin Hotel



E. Walton Place

### KEY PLAN

## INSTALLATION NOTES

- A. All window counts, sizes, and field conditions shown on these drawings must be verified by the window installer prior to the manufacturing of window units.
- B. Windows must be installed plumb, square, straight, level in their proper elevation and in proper alignment with other related work.
- C. Exterior frame shall be caulked to the existing conditions using (color ?) caulk. Color of caulk to be selected by Architect. All exterior caulk shall be supplied and installed by \_\_\_\_\_.
- D. All wood blocking or shimming, where required, shall be furnished and installed by \_\_\_\_\_. Provide and install shims to fully support the weight of the windows.

## SEALING NOTES

### FACTORY SEALED WINDOW FRAME

- 1. Ends of frame butt sealed, fastened and back sealed using Schnee Morhead 5504 joint sealant.
- 2. All screw heads and threads sealed with SM-5504.

### SET WINDOW IN BED OF SEALANT

- 1. Use Dow 795 silicone.
- 2. Crossover seal between window frame, jamb receptor and receptor pressure clip 3" above top of interior sill starter riser leg. This seal must make the connection to the sealant bed that runs across the sill starter.
- 3. Cap seal interior and exterior of sill starter.
- 4. All exterior and interior field metal joints are to be sealed.

## GENERAL NOTES

- 1. All Windows furnished under this contract shall be manufactured by Graham Architectural Products, York, PA. All units shall meet or exceed the AAMA/ANSI Voluntary Specification 101-93.
  - a) Fixed Transom units shall be Series 1500.
  - b) Fixed units shall be Series 1500.
  - c) Double Hung units shall be Series 2500.
  - d) Projected units shall be Series 6900.
  - e) Security Screen units shall be Series 1500, 2500, 6900.

- 2. All exposed surfaces of window members, trim, angles, mull covers, break form and exterior panning shall be finished using an AAMA 2605 70% Fluoropolymer paint system.

### 3. Glazing shall be as follows:

- GL-1 1" Clear Insulated Tempered Low-E Glass Units shall consist of
  - (1) Exterior Piece of 1/4" Clear Tempered Glass
  - (1) Interior Piece of 1/4" Clear Tempered Glass

- 4. All windows shall contain a continuous uninterrupted thermal break around the entire perimeter of all frames and sash members.

## HARDWARE

- 1. Single Hung Units shall have Extruded Sill Locks.
- 2. Single Hung Units shall have Block & Tackle Balances. Class 5 Balances to be supplied where sash weight exceeds 70 pounds.
- 3. Casement Units shall have 4 Bar Hinges.
- 4. Casement Units shall have Cam Locks.

1ST SUBMISSION: 08/20/09

NOTE: SIGNATURE IS REQUIRED IN THIS BLOCK TO BEGIN THE FABRICATION PROCESS.

THESE SHOP DRAWINGS ARE AN INTERPRETATION OF THE PROJECT ENTITLED AND ARE SUPPLIED TO THE CONTRACTOR AND/OR COMPANY REPRESENTATIVE FOR APPROVAL AS WELL AS THE ARCHITECT. THESE DRAWINGS MAY VARY FROM THE ARCHITECTURAL DRAWINGS. THE SHOP DRAWINGS MUST BE THOROUGHLY REVIEWED TO ELIMINATE ANY PARTIES FROM RECEIVING INACCURATE MATERIALS.

I HEREBY CERTIFY THAT ALL DIMENSIONS, QTY'S, PLANS AND ELEVATIONS ARE CORRECT, AS INDICATED ON THE ENCLOSED SHOP DRAWINGS. I HEREBY AUTHORIZE FABRICATION OF THE ENCLOSED INDICATED STRUCTURE(S), AS PER THESE DRAWINGS.

PRINT NAME: \_\_\_\_\_ DATE: \_\_\_\_\_

SIGNATURE: \_\_\_\_\_

### CONTRACTORS NOTE:

ALL DIMENSIONS TO BE VERIFIED OR GUARANTEED BY GENERAL CONTRACTOR.  
ALL QUANTITIES TO BE VERIFIED OR GUARANTEED BY GENERAL CONTRACTOR.  
ALL DETAILS AND DIMENSIONS TO BE VERIFIED OR GUARANTEED BY GENERAL CONTRACTOR. M.O. WILL BE HELD PER THIS SUBMITTAL ONCE APPROVED.

THESE DRAWINGS MUST BE STAMPED/MARKED APPROVED OR APPROVED AS NOTED FOR FABRICATION OF HERE-IN ITEMS TO BEGIN.  
THESE DRAWINGS ARE NOT FOR USE BY OTHER TRADES.

### WINDOW MANUFACTURER NOTE:

ALL PART NUMBERS SHOWN ON SHOP DRAWINGS ARE FOR REFERENCE ONLY.

### ABBREVIATIONS AND DRAWING SYMBOLS REFERENCE

- A.F.F. = ABOVE FINISH FLOOR
- CL = CENTER LINE
- D.D. = DOOR DIMENSION
- D.L.O. = DAYLIGHT OPENING
- D.O. = DOOR OPENING
- F.D. = FRAME DIMENSION
- F.H. = FRAME HEIGHT
- F.W. = FRAME WIDTH
- M.O. = MASONRY OPENING
- O.F.D. = OVERALL FIELD
- O.R.D. = OVERALL RECEPTOR
- O.W.D. = OVERALL WINDOW
- R.O. = ROUGH OPENING
- SIM. = SIMILAR
- TYP. = TYPICAL
- W.D. = WINDOW DIMENSION
- WDW. = WINDOW

XX WINDOW MARK

1  
D-03  
DETAIL NUMBER

SHEET NO.

## DRAWING LIST

DWG NO.	DRAWING NAME	REV #	REV DATE	REVISION DESCRIPTION
<b>COVER SHEETS</b>				
C-01	COVER / GENERAL NOTES	1	02/08/05	REVISED PER ENGINEERS REVIEW
C-02	DRAWING LIST	1	02/08/05	REVISED PER ENGINEERS REVIEW
C-03	MANUAL M.O. TAKE-OFF	1	02/08/05	REVISED PER ENGINEERS REVIEW
<b>WINDOW SCHEDULE</b>				
WS-01	WINDOW SCHEDULE	1	02/08/05	REVISED PER ENGINEERS REVIEW
<b>WINDOW ELEVATIONS</b>				
WE-01	WINDOW ELEVATIONS	1	02/08/05	REVISED PER ENGINEERS REVIEW
WE-02	WINDOW ELEVATIONS	1	02/08/05	REVISED PER ENGINEERS REVIEW
WE-03	WINDOW ELEVATIONS	1	02/08/05	REVISED PER ENGINEERS REVIEW
<b>DETAILS</b>				
D-01	WINDOW DETAILS - 1, 2, 3	1	02/08/05	REVISED PER ENGINEERS REVIEW
D-02	WINDOW DETAILS - 4, 5, 6	1	02/08/05	REVISED PER ENGINEERS REVIEW
D-03	WINDOW DETAILS - 7, 8, 9	1	02/08/05	REVISED PER ENGINEERS REVIEW
D-04	WINDOW DETAILS - 10, 11, 11*,12	1	02/08/05	REVISED PER ENGINEERS REVIEW
D-05	WINDOW DETAILS - 13, 14, 14*,15	1	02/08/05	REVISED PER ENGINEERS REVIEW
D-06	WINDOW DETAILS - 16, 17	1	02/08/05	REVISED PER ENGINEERS REVIEW
D-07	WINDOW DETAILS - 18, 19	1	02/08/05	REVISED PER ENGINEERS REVIEW
D-08	WINDOW DETAILS - 20, 21, 22	1	02/08/05	REVISED PER ENGINEERS REVIEW
D-09	WINDOW DETAILS - 23, 24	1	02/08/05	REVISED PER ENGINEERS REVIEW
D-10	WINDOW DETAILS - 25, 26, 27	1	02/08/05	REVISED PER ENGINEERS REVIEW
D-11	WINDOW DETAILS - 28, 29, 30	1	02/08/05	REVISED PER ENGINEERS REVIEW
D-12	WINDOW DETAILS - 31, 32, 33	1	02/08/05	REVISED PER ENGINEERS REVIEW
D-13	WINDOW DETAILS - 34, 35, 36	1	02/08/05	REVISED PER ENGINEERS REVIEW
D-14	WINDOW DETAILS - 37, 38	1	02/08/05	REVISED PER ENGINEERS REVIEW
D-15	WINDOW DETAILS - 39, 40	1	02/08/05	REVISED PER ENGINEERS REVIEW
D-16	WINDOW DETAILS - 41, 42, 43	1	02/08/05	REVISED PER ENGINEERS REVIEW
D-17	WINDOW DETAILS - 44, 45, 46	1	02/08/05	REVISED PER ENGINEERS REVIEW
D-18	WINDOW DETAILS - 47, 47*	1	02/08/05	REVISED PER ENGINEERS REVIEW
D-19	WINDOW DETAILS - 48, 49	1	02/08/05	REVISED PER ENGINEERS REVIEW
D-20	WINDOW DETAILS - 50	1	02/08/05	REVISED PER ENGINEERS REVIEW
D-21	WINDOW DETAILS - 51	1	02/08/05	REVISED PER ENGINEERS REVIEW

## DRAWING LIST

DWG NO.	DRAWING NAME	REV #	REV DATE	REVISION DESCRIPTION
<b>BUILDING ELEVATIONS</b>				
BE-01	NORTH & WEST ELEVATION	1	02/08/05	NO REVISIONS THIS SHEET
BE-02	SOUTH & EAST ELEVATION	1	02/08/05	NO REVISIONS THIS SHEET
<b>FLOOR PLANS</b>				
FP-1	- 1ST FLOOR	1	02/08/05	NO REVISIONS THIS SHEET
FP-2	- 2ND FLOOR	1	02/08/05	NO REVISIONS THIS SHEET
FP-3	- 3RD FLOOR	1	02/08/05	NO REVISIONS THIS SHEET
FP-4	- 4TH FLOOR	1	02/08/05	NO REVISIONS THIS SHEET
FP-5	- 5TH FLOOR	1	02/08/05	NO REVISIONS THIS SHEET
FP-6	- 6TH FLOOR	1	02/08/05	NO REVISIONS THIS SHEET
FP-7	- 7TH FLOOR	1	02/08/05	NO REVISIONS THIS SHEET
FP-8	- 8TH FLOOR	1	02/08/05	NO REVISIONS THIS SHEET
FP-9	- 9TH FLOOR	1	02/08/05	NO REVISIONS THIS SHEET
FP-10	- 10TH FLOOR	1	02/08/05	NO REVISIONS THIS SHEET
FP-11	- 11TH FLOOR	1	02/08/05	NO REVISIONS THIS SHEET
FP-12	- 12TH FLOOR	1	02/08/05	NO REVISIONS THIS SHEET
FP-13	- 13TH FLOOR	1	02/08/05	NO REVISIONS THIS SHEET
FP-14	- 14TH FLOOR	1	02/08/05	NO REVISIONS THIS SHEET
FP-15	- 15TH FLOOR	1	02/08/05	NO REVISIONS THIS SHEET
FP-16	- 16TH FLOOR	1	02/08/05	NO REVISIONS THIS SHEET
FP-17	- 17TH FLOOR	1	02/08/05	NO REVISIONS THIS SHEET
FP-18	- 18TH FLOOR	1	02/08/05	NO REVISIONS THIS SHEET
FP-19	- 19TH FLOOR	1	02/08/05	NO REVISIONS THIS SHEET
FP-20	- 20TH FLOOR	1	02/08/05	NO REVISIONS THIS SHEET
FP-21	- 21ST FLOOR	1	02/08/05	NO REVISIONS THIS SHEET
FP-22	- 22ND FLOOR	1	02/08/05	NO REVISIONS THIS SHEET
FP-23	- 23RD FLOOR	1	02/08/05	NO REVISIONS THIS SHEET
FP-24	- 24TH FLOOR	1	02/08/05	NO REVISIONS THIS SHEET
FP-25	- 25TH FLOOR	1	02/08/05	NO REVISIONS THIS SHEET
FP-26	- 26TH FLOOR	1	02/08/05	NO REVISIONS THIS SHEET
FP-27	- 27TH FLOOR	1	02/08/05	NO REVISIONS THIS SHEET
FP-28	- 28TH FLOOR	1	02/08/05	NO REVISIONS THIS SHEET
FP-29	- 29TH FLOOR	1	02/08/05	NO REVISIONS THIS SHEET
FP-30	- 30TH FLOOR	1	02/08/05	NO REVISIONS THIS SHEET
FP-31	- 31ST FLOOR	1	02/08/05	NO REVISIONS THIS SHEET

DRAWING NO.  
**C-02**

SCALE:  
**NONE**

BY	DATE	BY	DATE	BY	DATE	BY	DATE

DRAWN BY: \_\_\_\_\_  
DATE: 09/25/08  
CHECK BY: \_\_\_\_\_  
DATE: \_\_\_\_\_

PROJECT: .....  
LOCATION: .....  
ARCHITECT: .....  
OWNER: .....

DRAWING TITLE  
**DRAWING LIST**

..

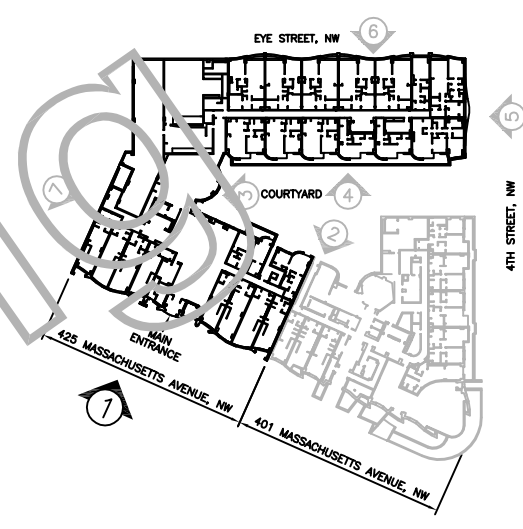
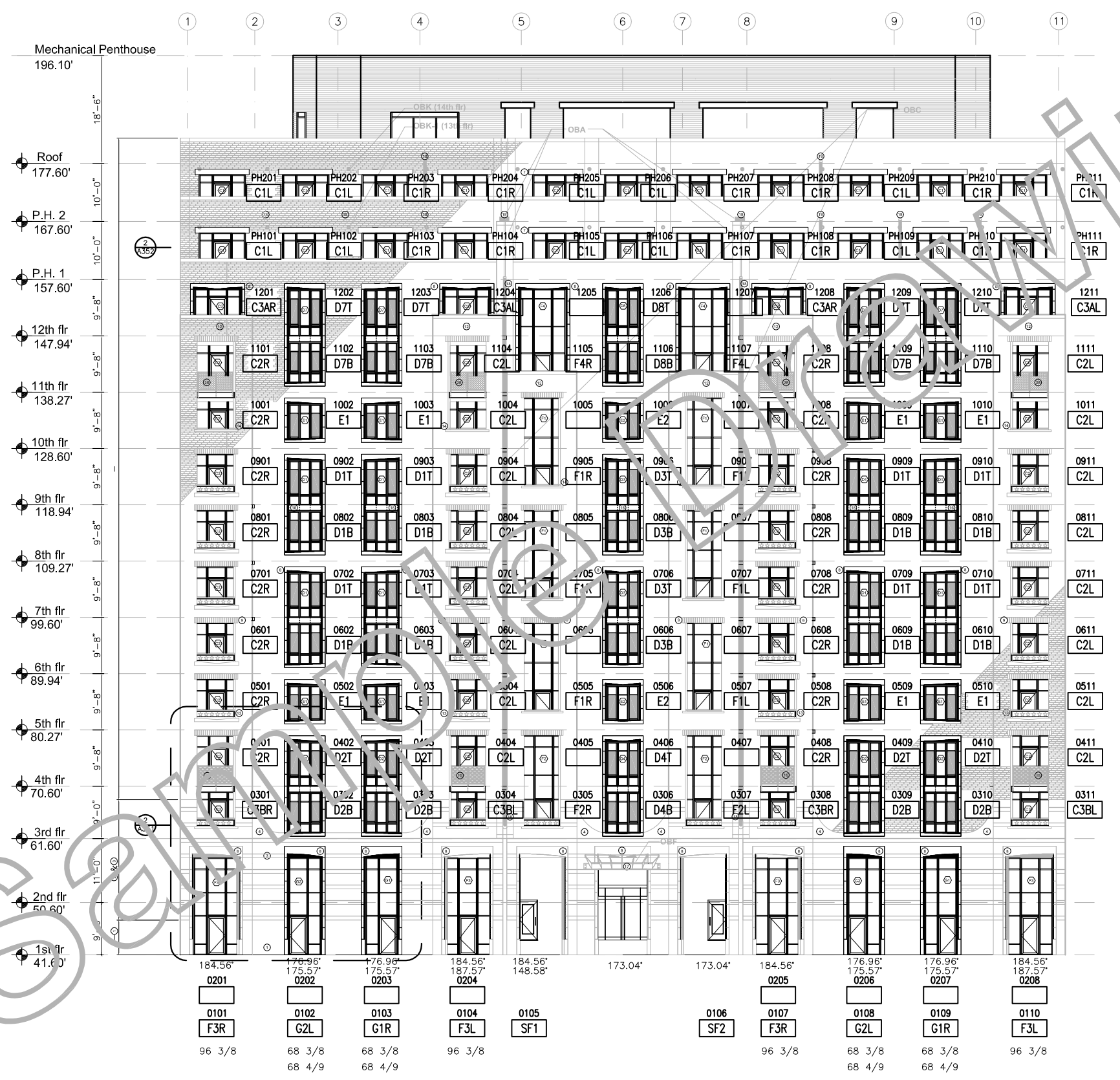
DRAWING NO.  
**C-02**











DRAWING NO. <b>BE-01</b>	
SCALE: <b>AS NOTED</b>	
BY DATE:	
REVISIONS:	
DRAWN BY:	09/25/08
DATE:	
CHECK BY:	
DATE:	
PROJECT:	.....
LOCATION:	.....
ARCHITECT:	.....
OWNER:	.....
DRAWING TITLE <b>BUILDING ELEVATIONS</b>	
..	
DRAWING NO. <b>BE-01</b>	

DRAWING NO.  
FP-01

SCALE:  
AS NOTED

REVISIONS	BY	DATE

DRAWN BY:                      DATE: 09/25/08

CHECK BY:                      DATE:

PROJECT: .....

LOCATION: .....

ARCHITECT: .....

OWNER: .....

DRAWING TITLE  
FLOOR PLANS

18TH FLOOR  
DRAWING NO.  
FP-01

② Westin Hotel

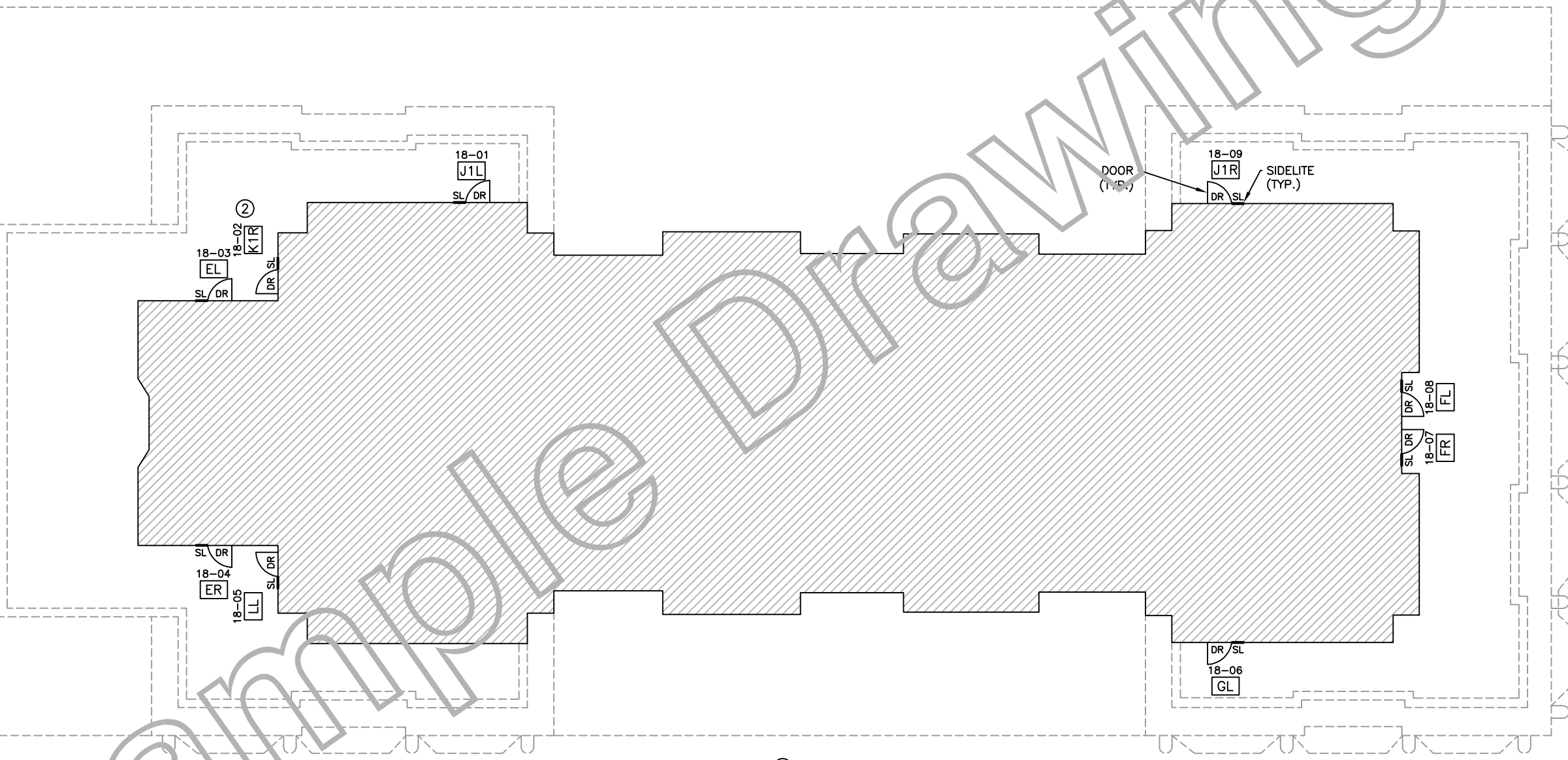
② Knickerbocker Hotel

N. Michigan Avenue

② E. Walton Place

18 18th FLOOR PLAN  
SCALE: NOT TO SCALE

② NOTE:  
DOOR/SIDELITE LOCATIONS AND DIRECTION  
OF DOOR SWING TO BE VERIFIED BY  
GENERAL CONTRACTOR/HARMON.



Sample Drawing