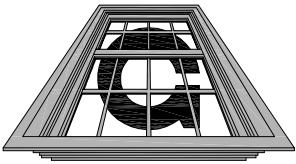


Graham



Architectural Products

Hurricane Impact - 4"

Sliding Glass Door

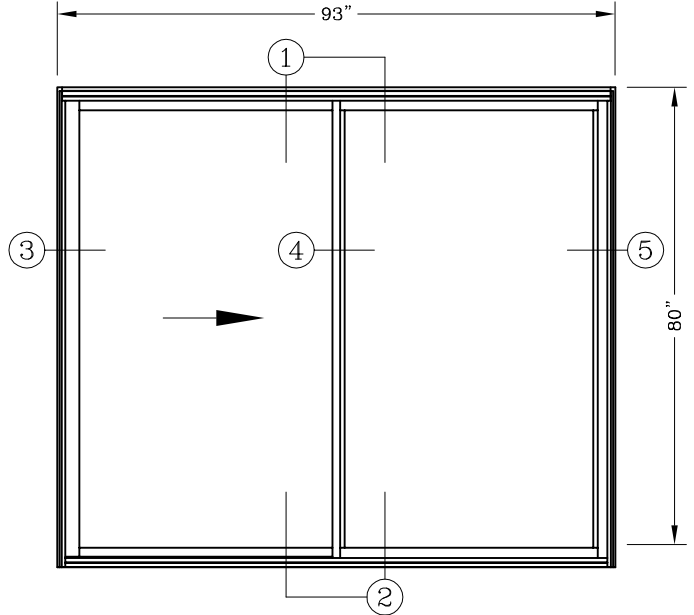
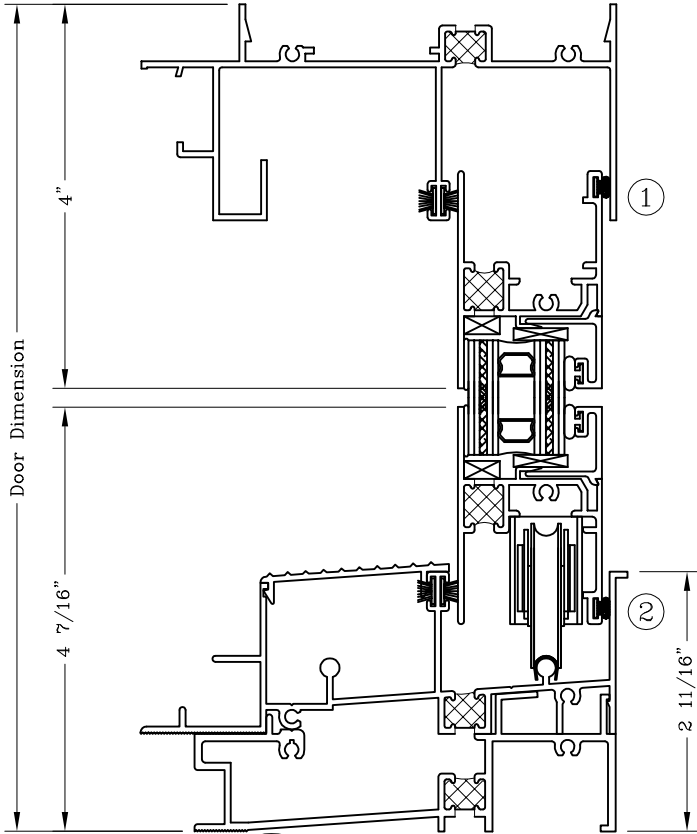
Tested To +60DP/-60DP (Large Missile)

Series: HI0800

Manufacturing Code: HI0801

Drawing 1/2 Scale - For Custom Size Drawing Contact Graham

Note: Sealant Not Shown On Details. Consult Technical Services At Factory For Sealing Procedures.



ELEVATION
X0 Shown
93" x 80" Tested

INSTALLATION TYPES

1. Through Frame Anchors At Head And Jamb.
 2. Trim Clip Across Sill.
- (Reference Test Report #63439.01-109-18)

Glazing To Be:

- 1" IG Consisting Of;
- 5/16" Lami Consisting Of;
- 1/8" Thick Heat Strengthened Exterior
- .075 Storm Glass Interlayer (Solutia)
- 1/8" Thick Heat Strengthened Interior
- And
- 5/16" Lami Consisting Of;
- 1/8" Thick Heat Strengthened Exterior
- .075 Storm Glass Interlayer (Solutia)
- 1/8" Thick Heat Strengthened Interior

