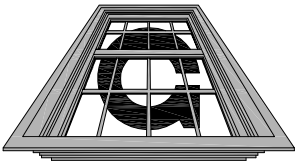


Meets Or  
Exceeds  
UFC 2007 &  
GSA Level C

Graham



Architectural Products

# Blast Mitigation - 4"

Fixed

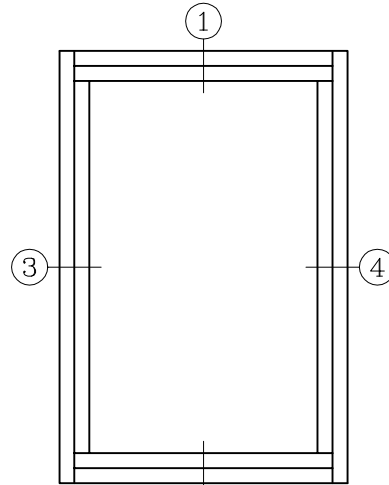
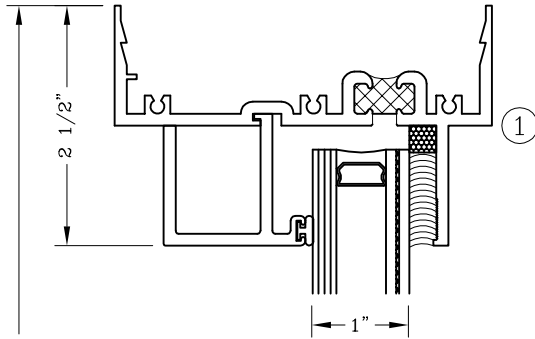
Tested 6.2 PSI @ 42 PSI MSEC

Series: B1400E

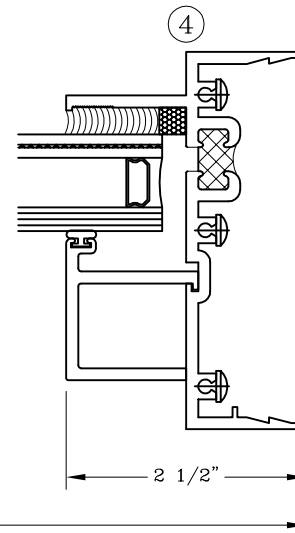
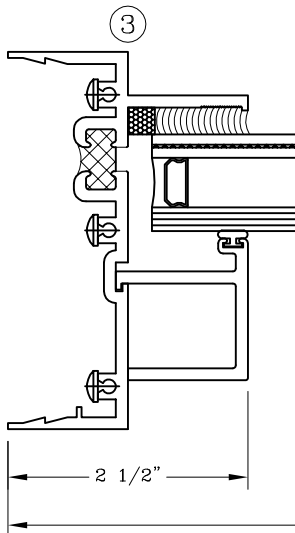
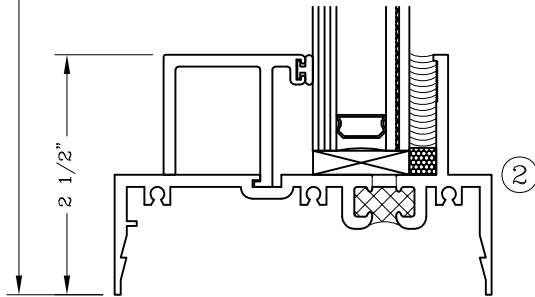
Manufacturing Code: B1401E

Drawing 1/2 Scale - For Custom Size Drawing Contact Graham

Note: Sealant Not Shown On Details. Consult Technical Services At Factory For Sealing Procedures.  
For Other Blast Pressures And GSA Levels Contact Factory



ELEVATION



Window Dimension