

Graham



Architectural Products

Security Screens – Perforated

2500 Frame

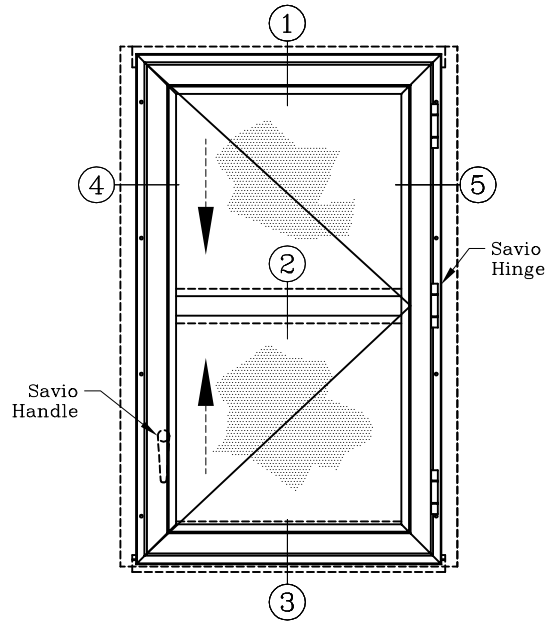
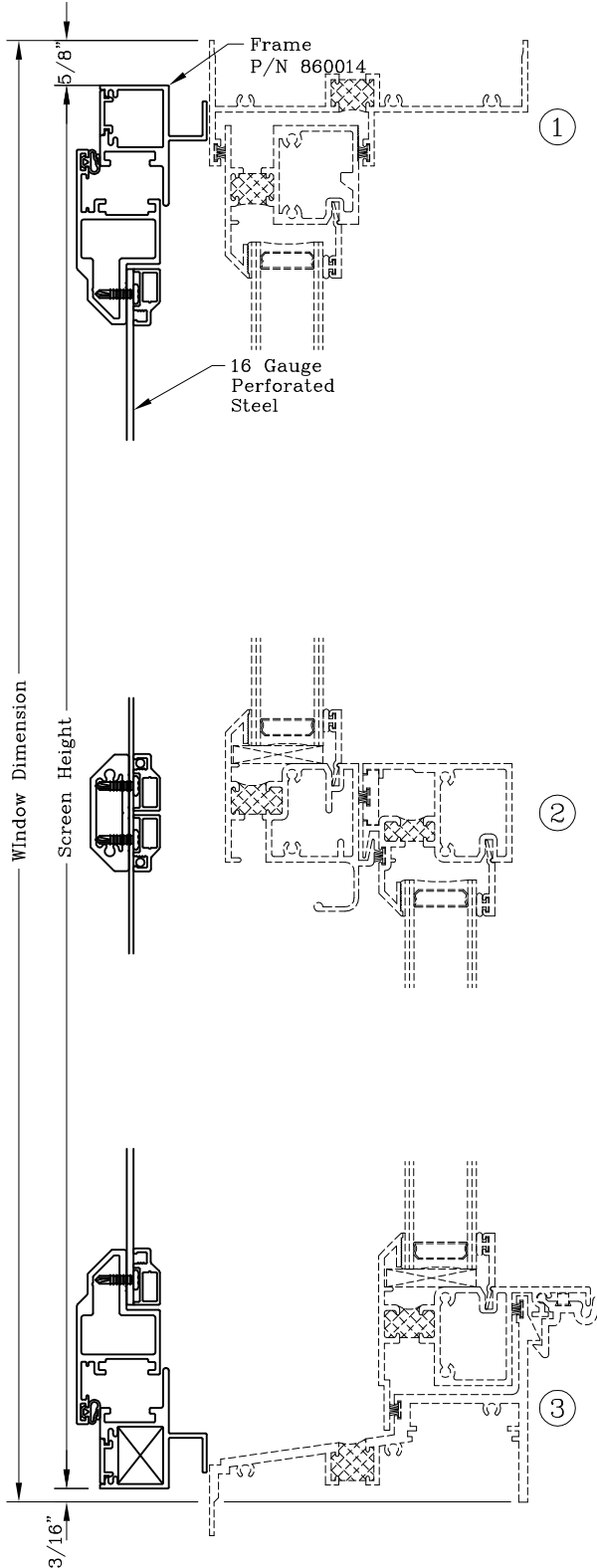
On 2500 Double Hung

Series: 8600

Manufacturing Code: 8603

Drawing 3/8 Scale – For Custom Size Drawing Contact Graham

Note: Sealant Not Shown On Details. Consult Technical Services At Factory For Sealing Procedures.



ELEVATION

Frame With Screen Track On Double Hung Shown
(Viewed From Exterior)
(Refer To Chart For Other Series)

Series Frame Application For Keystone Frame	
Series	Frame
2000	Single Hung With Screen Track
2500	Block & Tackle or Class '5" Balances With Screen Track
3000	With Screen Track

